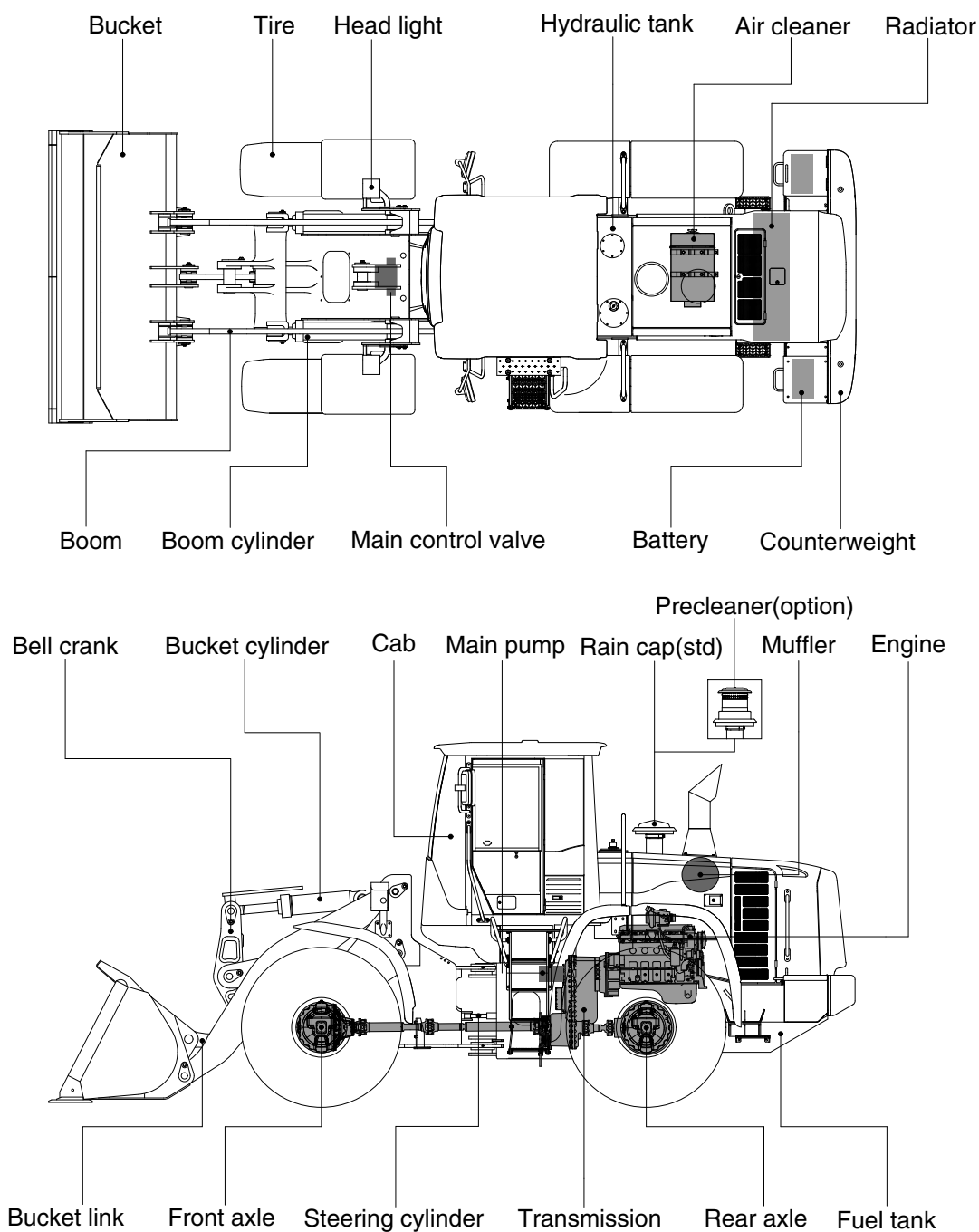


2. SPECIFICATIONS

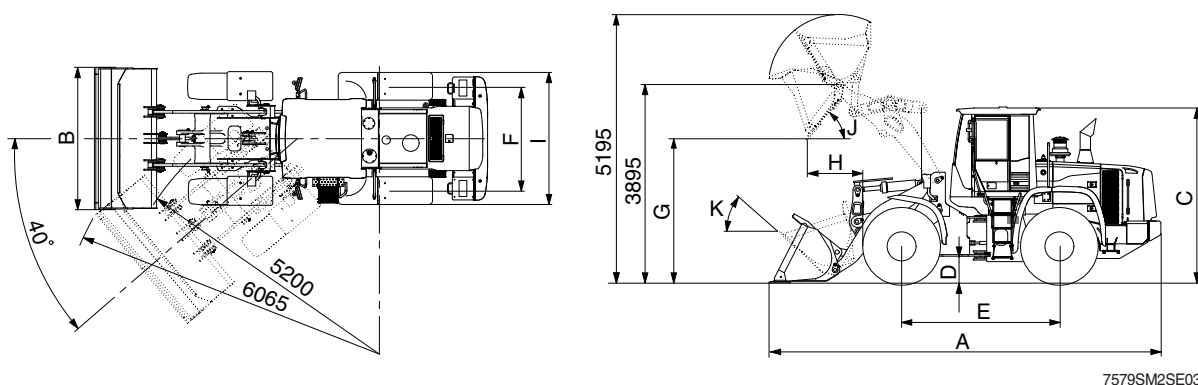
1. MAJOR COMPONENTS



7579SM2SE01

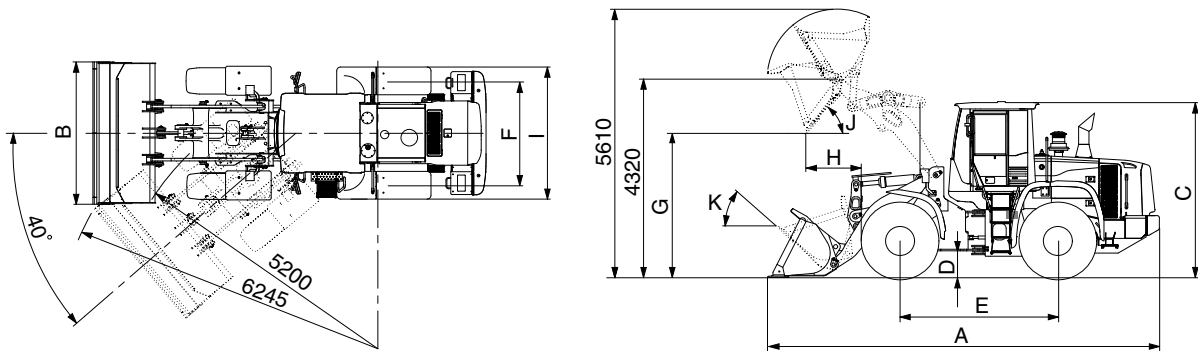
2. SPECIFICATIONS

1) WITH BOLT-ON CUTTING EDGE TYPE BUCKET (HL757-9SM)



Description			Unit	Specification
Operating weight			kg (lb)	13600 (30000)
Bucket capacity	Struck		m³ (yd³)	2.1 (2.8)
	Heaped			2.5 (3.3)
Overall length	A		mm (ft-in)	7445 (24' 5")
Overall width	B			2740 (9' 0")
Overall height	C			3400 (11' 2")
Ground clearance	D			410 (1' 4")
Wheelbase	E			3050 (10' 0")
Tread	F			2050(6' 9")
Dump clearance at 45°	G			2870 (9' 5")
Dump reach (full lift)	H			1035 (3' 5")
Width over tires	I			2580 (8' 6")
Dump angle	J			degree (°)
Roll back angle (carry position)	K		46	
Cycle time	Lift (with load)		sec	6.1
	Dump (with load)			1.2
	Lower (empty)			3.1
Maximum travel speed			km/hr (mph)	38.0 (23.6)
Braking distance			m (ft-in)	12 (39' 4")
Minimum turning radius (center of outside tire)				5.2 (17' 1")
Gradeability			degree (°)	30
Brakeout force			kg (lb)	13120 (28920)
Travel speed	Forward	First gear	km/hr (mph)	7.2 (4.5)
		Second gear		11.9 (7.4)
		Third gear		23.8 (14.8)
		Fourth gear		38.0 (23.6)
	Reverse	First gear		7.6 (4.7)
		Second gear		12.6 (7.8)
		Third gear		25.1 (15.6)

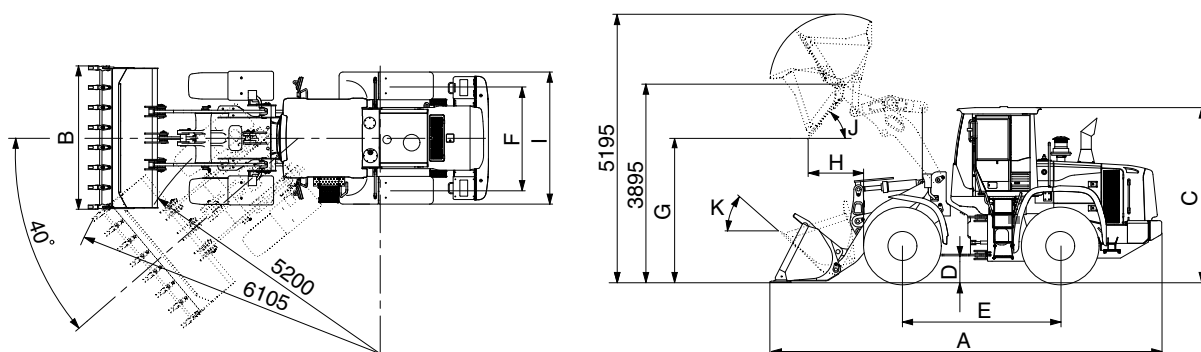
WITH BOLT-ON CUTTING EDGE TYPE BUCKET (HL757XTD-9SM)



7579SM2SE03-1

Description			Unit	Specification
Operating weight			kg (lb)	14180 (31260)
Bucket capacity	Struck		m³ (yd³)	2.1 (2.8)
	Heaped			2.5 (3.3)
Overall length	A		mm (ft-in)	7870 (25' 10")
Overall width	B			2740 (9' 0")
Overall height	C			3400 (11' 2")
Ground clearance	D			410 (1' 4")
Wheelbase	E			3050 (10' 0")
Tread	F			2050 (6' 9")
Dump clearance at 45°	G			3295 (10' 10")
Dump reach (full lift)	H			1037 (3' 5")
Width over tires	I			2580 (8' 6")
Dump angle	J			degree (°)
Roll back angle (carry position)	K		48	
Cycle time	Lift (with load)		sec	6.1
	Dump (with load)			1.2
	Lower (empty)			3.1
Maximum travel speed			km/hr (mph)	38.0 (23.6)
Braking distance			m (ft-in)	12 (39' 4")
Minimum turning radius (center of outside tire)				5.2 (17' 1")
Gradeability			degree (°)	30
Brakeout force			kg (lb)	12950 (28550)
Travel speed	Forward	First gear	km/hr (mph)	7.2 (4.5)
		Second gear		11.9 (7.4)
		Third gear		23.8 (14.8)
		Fourth gear		38.0 (23.6)
	Reverse	First gear		7.6 (4.7)
		Second gear		12.6 (7.8)
		Third gear		25.1 (15.6)

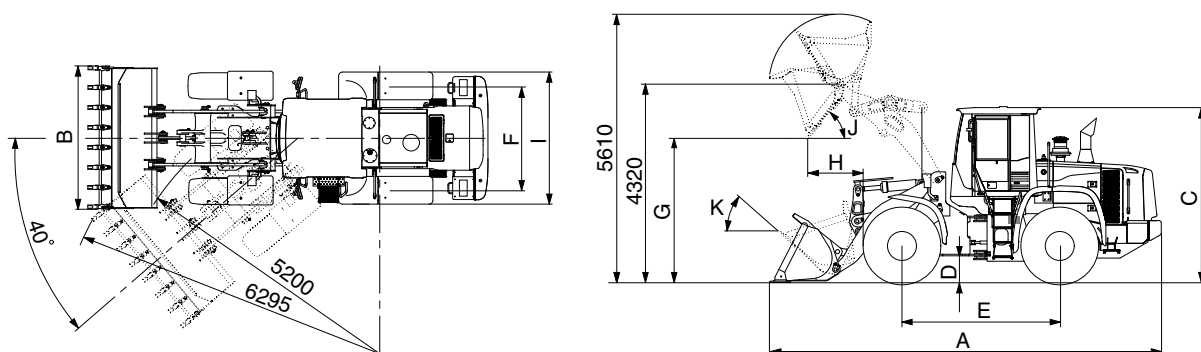
2) WITH TOOTH TYPE BUCKET (HL757-9SM)



7579SM2SE02

Description			Unit	Specification
Operating weight			kg (lb)	13600 (30000)
Bucket capacity	Struck		m³ (yd³)	2.0 (2.6)
	Heaped			2.4 (3.1)
Overall length	A		mm (ft-in)	7565 (24' 10")
Overall width	B			2790 (9' 2")
Overall height	C			3400 (11' 2")
Ground clearance	D			410 (1' 4")
Wheelbase	E			3050 (10' 0")
Tread	F			2050 (6' 9")
Dump clearance at 45°	G			2785 (9' 2")
Dump reach (full lift)	H			1110 (3' 8")
Width over tires	I			2580 (8' 6")
Dump angle	J			degree (°)
Roll back angle (carry position)	K		46	
Cycle time	Lift (with load)		sec	6.1
	Dump (with load)			1.2
	Lower (empty)			3.1
Maximum travel speed			km/hr (mph)	38.0 (23.6)
Braking distance			m (ft-in)	12 (39' 4")
Minimum turning radius (center of outside tire)				5.2 (17' 1")
Gradeability			degree (°)	30
Brakeout force			kg (lb)	14080 (31040)
Travel speed	Forward	First gear	km/hr (mph)	7.2 (4.5)
		Second gear		11.9 (7.4)
		Third gear		23.8 (14.8)
		Fourth gear		38.0 (23.6)
	Reverse	First gear		7.6 (4.7)
		Second gear		12.6 (7.8)
		Third gear		25.1 (15.6)

WITH TOOTH TYPE BUCKET (HL757XTD-9SM)



7579SM2SE02-1

Description			Unit	Specification
Operating weight			kg (lb)	14180 (31260)
Bucket capacity	Struck		m³ (yd³)	2.0 (2.6)
	Heaped			2.4 (3.1)
Overall length	A		mm (ft-in)	7990 (26' 3")
Overall width	B			2790 (9' 2")
Overall height	C			3400 (11' 2")
Ground clearance	D			410 (1' 4")
Wheelbase	E			3050 (10' 0")
Tread	F			2050 (6' 9")
Dump clearance at 45°	G			3205 (10' 6")
Dump reach (full lift)	H			1115 (3' 8")
Width over tires	I			2580 (8' 6")
Dump angle	J			degree (°)
Roll back angle (carry position)	K		48	
Cycle time	Lift (with load)		sec	6.1
	Dump (with load)			1.2
	Lower (empty)			3.1
Maximum travel speed			km/hr (mph)	38.0 (23.6)
Braking distance			m (ft-in)	12 (39' 4")
Minimum turning radius (center of outside tire)				5.2 (17' 1")
Gradeability			degree (°)	30
Brakeout force			kg (lb)	13850 (30530)
Travel speed	Forward	First gear	km/hr (mph)	7.2 (4.5)
		Second gear		11.9 (7.4)
		Third gear		23.8 (14.8)
		Fourth gear		38.0 (23.6)
	Reverse	First gear		7.6 (4.7)
		Second gear		12.6 (7.8)
		Third gear		25.1 (15.6)

3. WEIGHT

Item		kg	lb
Front frame assembly		1139	2510
Rear frame assembly		1422	3130
Front fender (LH & RH)		31	68
Counterweight	HL757-9SM	550	1210
	HL757XTD-9SM	840	1850
Cab assembly		780	1720
Engine assembly		432	952
Transmission assembly		518	1140
Drive shaft (front)		26	57
Drive shaft (center)		22	49
Drive shaft (rear)		13	29
Front axle (include differential)		970	2140
Rear axle (include differential)		760	1680
Tire (20.5-25, 16PR, L3)		203	448
Hydraulic tank assembly		160	353
Fuel tank assembly		219	483
Main pump assembly		40	88
Fan & brake pump assembly		6.5	14.3
Main control valve (2/3 spool)		45 / 65	99 / 143
Steering valve (EHPS)		10	22
Boom assembly	HL757-9SM	980	2160
	HL757XTD-9SM	1145	2520
Bell crank assembly		264	580
Bucket link		48	110
2.5 m ³ bucket, with bolt on cutting edge		1060	2340
2.4 m ³ bucket, with tooth		1045	2300
Boom cylinder assembly		108	238
Bucket cylinder assembly		122	269
Steering cylinder assembly		29	64
Seat		40	88
Battery		44	97

4. SPECIFICATION FOR MAJOR COMPONENTS

1) ENGINE

Item	Specification
Model	Cummins 6BTAA5.9 / HYUNDAI HE 6.7
Type	4-cycle turbocharged and charge air-cooled diesel engine
Control type	Mechanical control
Cooling method	Water cooling
Number of cylinders and arrangement	6 cylinders, in-line
Firing order	1-5-3-6-2-4
Combustion chamber type	Direct injection type
Cylinder bore × stroke	102 × 120 mm (4.0" × 4.7")
Piston displacement	5900 cc (359 cu in)
Compression ratio	18.0 : 1
Rated horse power	173 hp at 2200 rpm
Maximum torque at 1300 rpm	80 kgf · m (579 lbf · ft)
Engine oil quantity	15 l (4.0 U.S. gal)
Wet weight	432 kg (952 lb)
High idling speed	2400 ± 50 rpm
Low idling speed	800 ± 25 rpm
Rated fuel consumption	225 g/kW · hr
Starting motor	Denso PA908 (24V-4.5kW)
Alternator	Delco Remy 24SI (24V-70Amp)
Battery	2 × 12V × 130Ah

2) MAIN PUMP

Item	Specification
Type	Gear pump
Capacity	51+51 cc/rev
Maximum operating pressure	210 kgf/cm ² (2990 psi)
Rated oil quantity	220 l /min (58.1 U.S.gpm)
High speed	2400 rpm

3) FAN + BRAKE PUMP

Item	Specification	
	Fan	Brake
Type	Gear pump	
Capacity	19.4 cc/rev	11.9 cc/rev
Maximum operating pressure	120 kgf/cm ² (1710 psi)	150 kgf/cm ² (2130 psi)
Rated oil quantity	42 l /min (11.1 U.S.gpm)	26 l /min (6.9 U.S.gpm)
High speed	2400 rpm	

4) MAIN CONTROL VALVE

Item	Specification
Type	2 spool
Operating method	Hydraulic pilot assist
System pressure	200 kgf/cm ² (2840 psi)
Overload relief valve pressure	240 kgf/cm ² (3410 psi)

5) REMOTE CONTROL VALVE

Item		Specification
Type		Pressure reducing type
Operating pressure	Minimum	6.5 kgf/cm ² (92.4 psi)
	Maximum	22 kgf/cm ² (312.9 psi)
Single operation stroke	Lever	80 mm (3.4 in)

6) CYLINDER

Item		Specification
Boom cylinder	Bore dia × Rod dia × Stroke	ø 140 × ø 75 × 750 mm
Bucket cylinder	Bore dia × Rod dia × Stroke	ø 160 × ø 80 × 475 mm
Steering cylinder	Bore dia × Rod dia × Stroke	ø 70 × ø 45 × 436 mm

7) DYNAMIC POWER TRANSMISSION DEVICES

Item		Specification
Transmission	Model	4WG190
	Type	Converter
		Single-stage, single-phase
	Transmission	
	Full-automatic power shift	
	Converter stall ratio	
	2.542 : 1	
Axle	Gear shift	
	Forward fourth gear, reverse third gear	
	Control	
Wheels	Electrical single lever type, kick-down system	
	Pump rated flow	
	105 ℓ /min (27.7 U.S.gpm) at 2000 rpm	
Brakes	Drive devices	
	4-wheel drive	
	Front	
Steering	Front fixed location	
	Rear	
	Oscillation ± 11° of center pin-loaded	
Travel	Tires	
	20.5-25, 16PR (L3)	
Parking	Travel	
	Four-wheel, wet-disc type, full hydraulic	
Steering angle	Parking	
	Spring applied, hydraulic released brake on transmission	
Type	Type	
	Full hydraulic, articulated	
Steering angle	Steering angle	
	40° to both right and left angle, respectively	